



# State Refugee Services Indicators of Integration: How are the states doing?

Harris M, Jorgensen K, Greene J, Frost CJ, Gren LH



## BACKGROUND

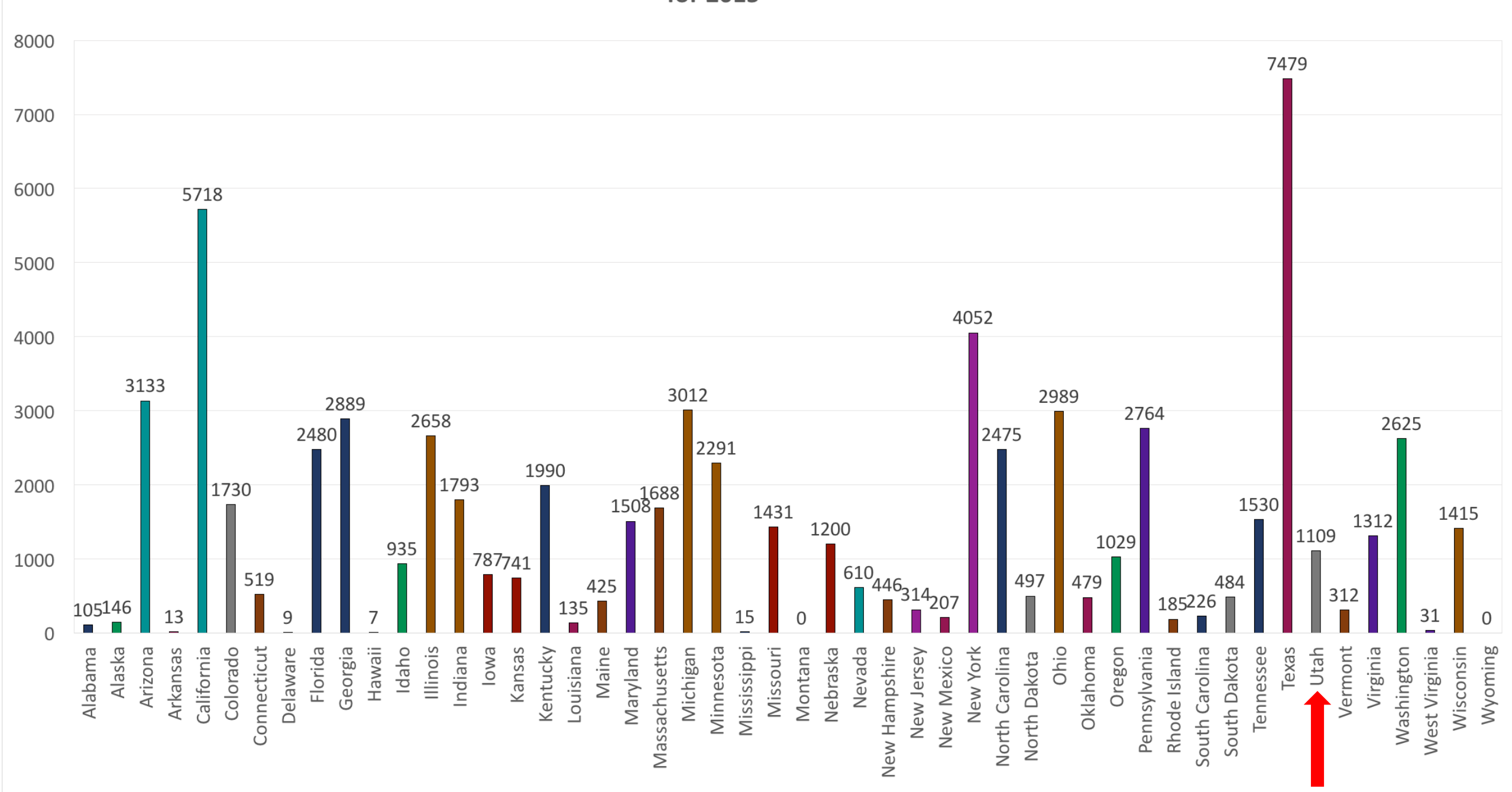
This was an evaluation of refugee services by state for the indicators of integration. The categories evaluated were:

- Means and Markers: Employment, housing, education, health
- Social Connections: Social bridges, social bonds, social links
- Facilitators: Language and cultural knowledge, safety and stability
- Foundation: Rights and citizenship

## DESIGN

- Office of Refugee Resettlement (ORR) state webpages
- Websites of the identified Refugee Service Providers
- Categorize provider services according to the Ager and Strang framework

# of Refugees Arriving by State for 2015



### Top 10 States Taking in Refugees in 2015

1. Texas
2. California
3. New York
4. Arizona
5. Michigan
6. Ohio
7. Georgia
8. Pennsylvania
9. Illinois
10. Washington

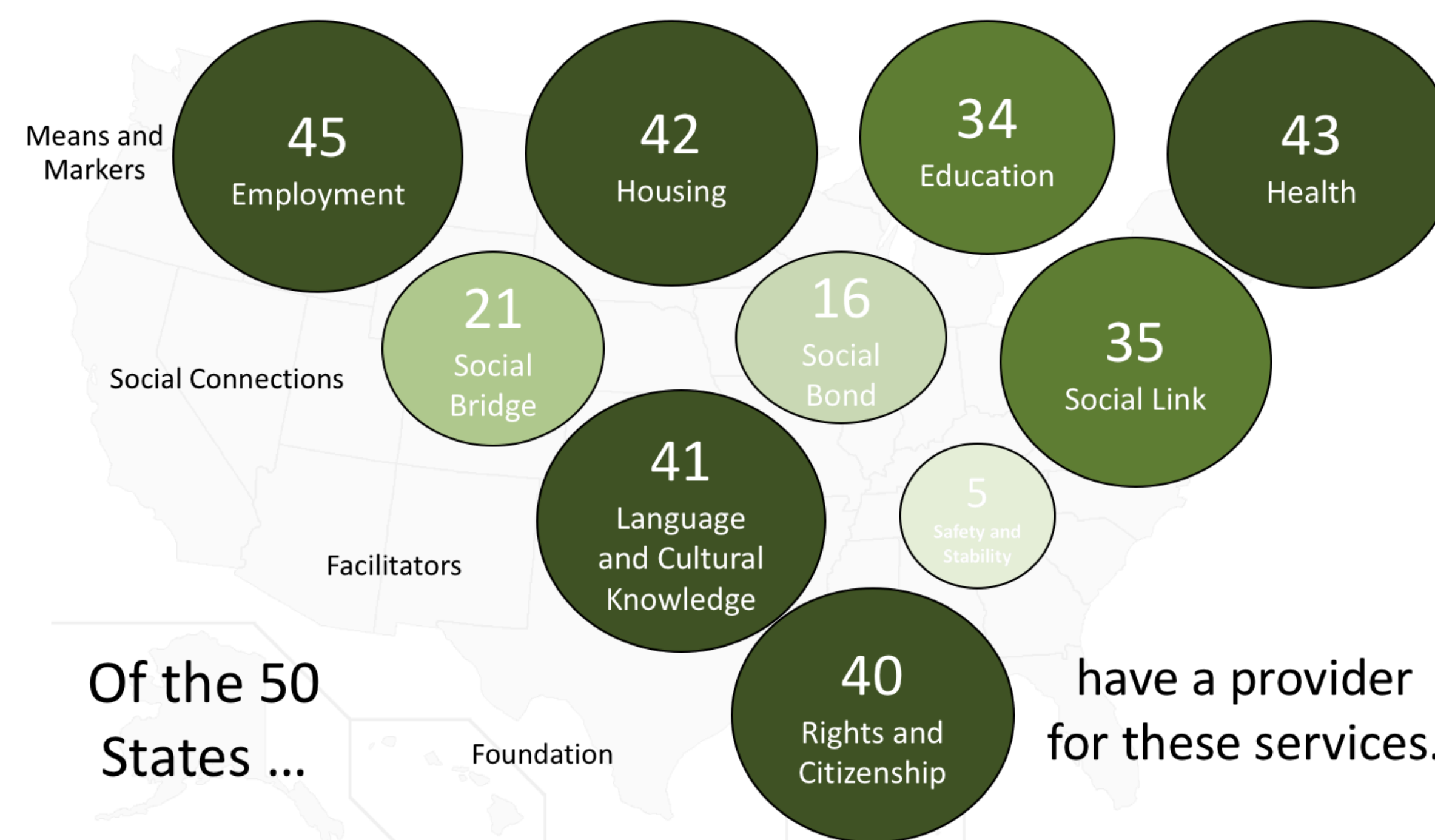
All reports were based off of ORR's Report to Congress

## LIMITATIONS

- There may have been variation in abstractors categorizing of services
- Information was obtained through websites, services were missed if not specifically stated

## RESULTS

- Means and Markers are where the majority of states provide services
- 30 states have 0-5 services providers with a varying range of services offered
- Indicators in the Social Connections category could use improvement among providers
- Safety and Stability is the least addressed indicator of integration



## CONCLUSIONS

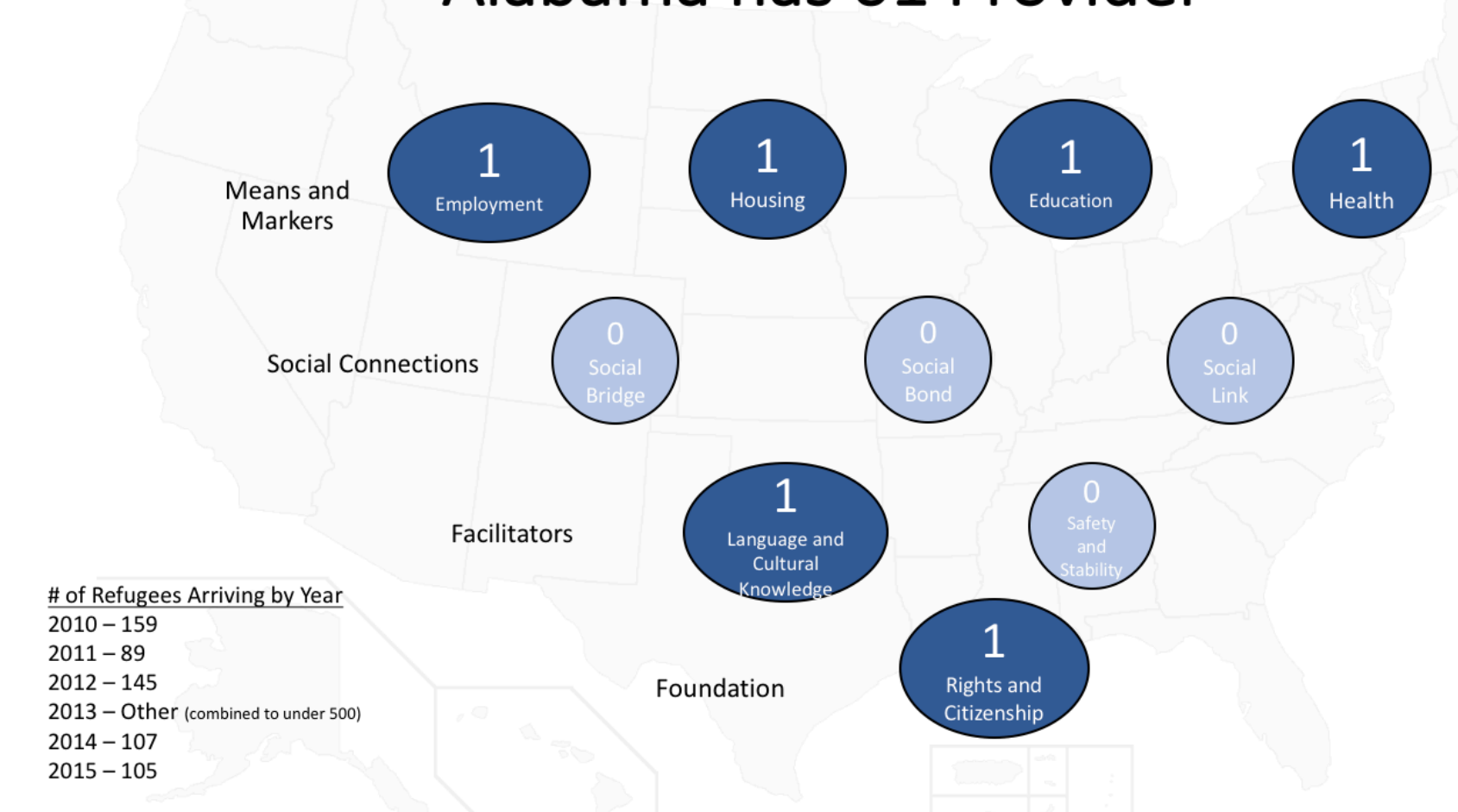
- ❖ May be useful to policymakers that are seeking to reform refugee resettlement in their states
- ❖ May help providers and policymakers identify gaps in service and change funding strategies

## REFERENCES

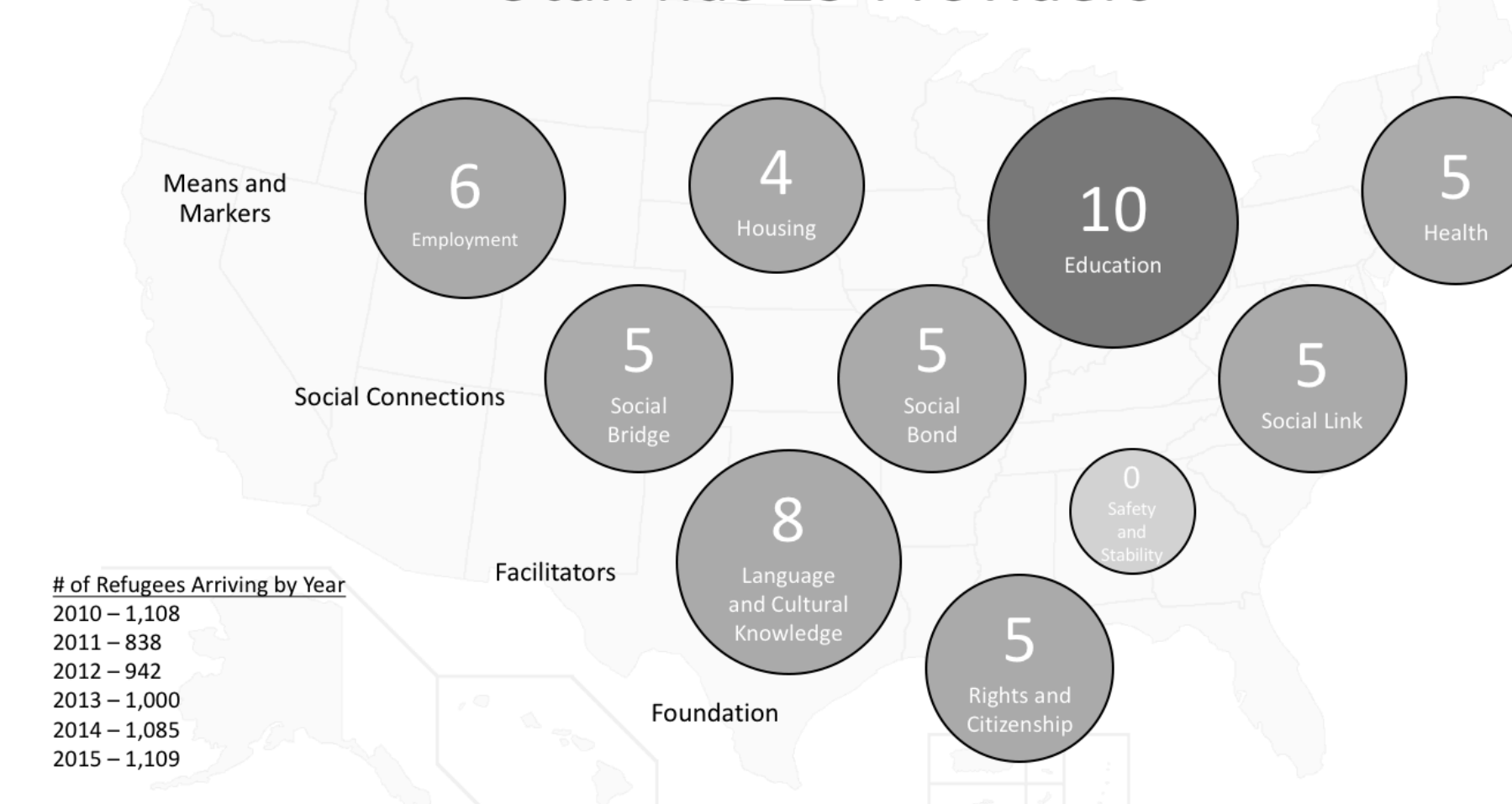
Ager, A. & Strang, A. (2004). Indicators of Integration: Final Report. U.K. Home Office Development and Practice Report #28. London: Home Office.

Harris, M., Greene, J., Jorgensen, K., Frost, C. J., & Gren, L. H. (2017). Indicators of Integration: How are the states doing? Retrieved from <https://socialwork.utah.edu/wp-content/uploads/sites/4/2017/08/White-Paper-3-State-Services.pdf>

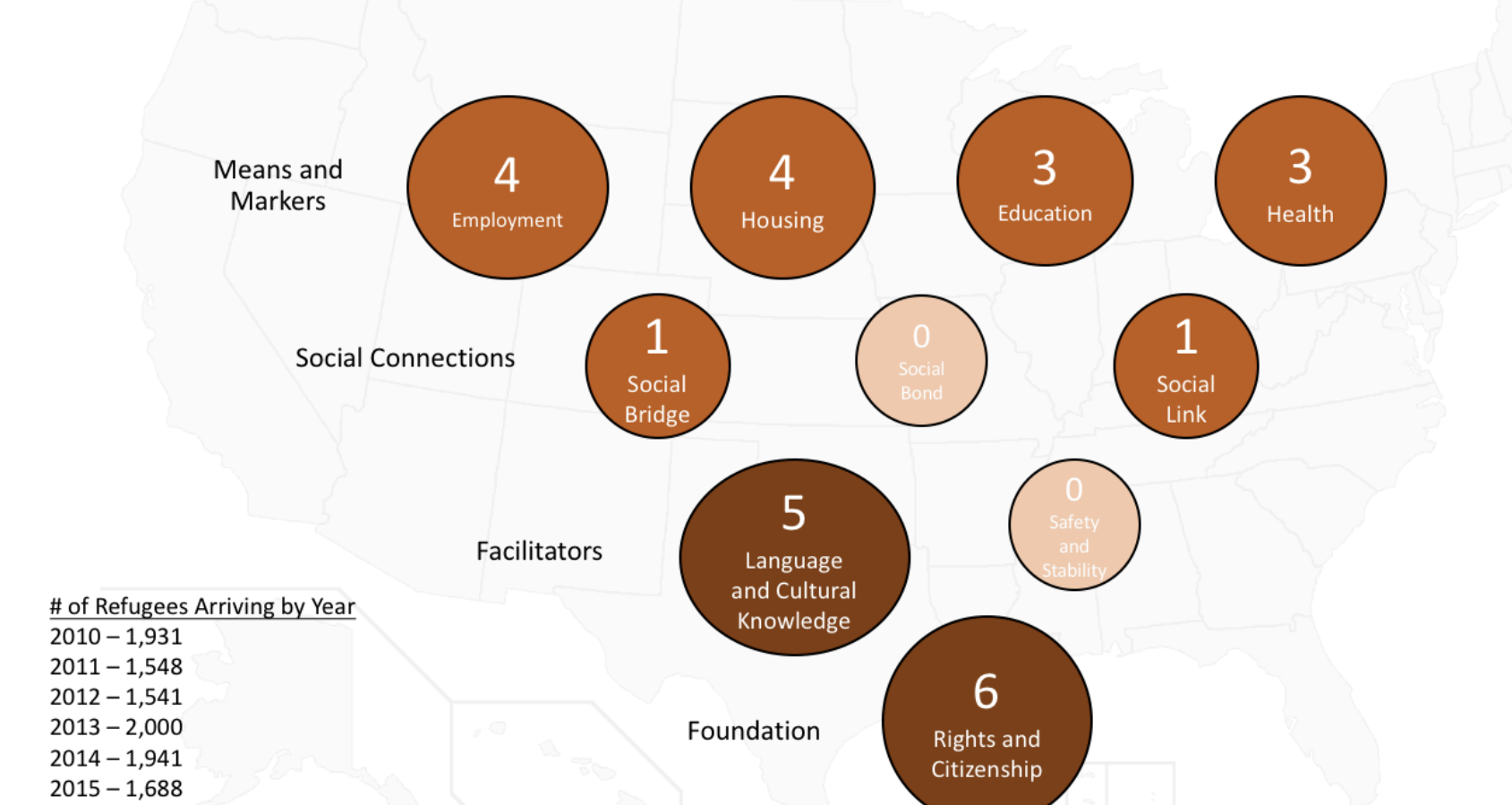
Alabama has 01 Provider



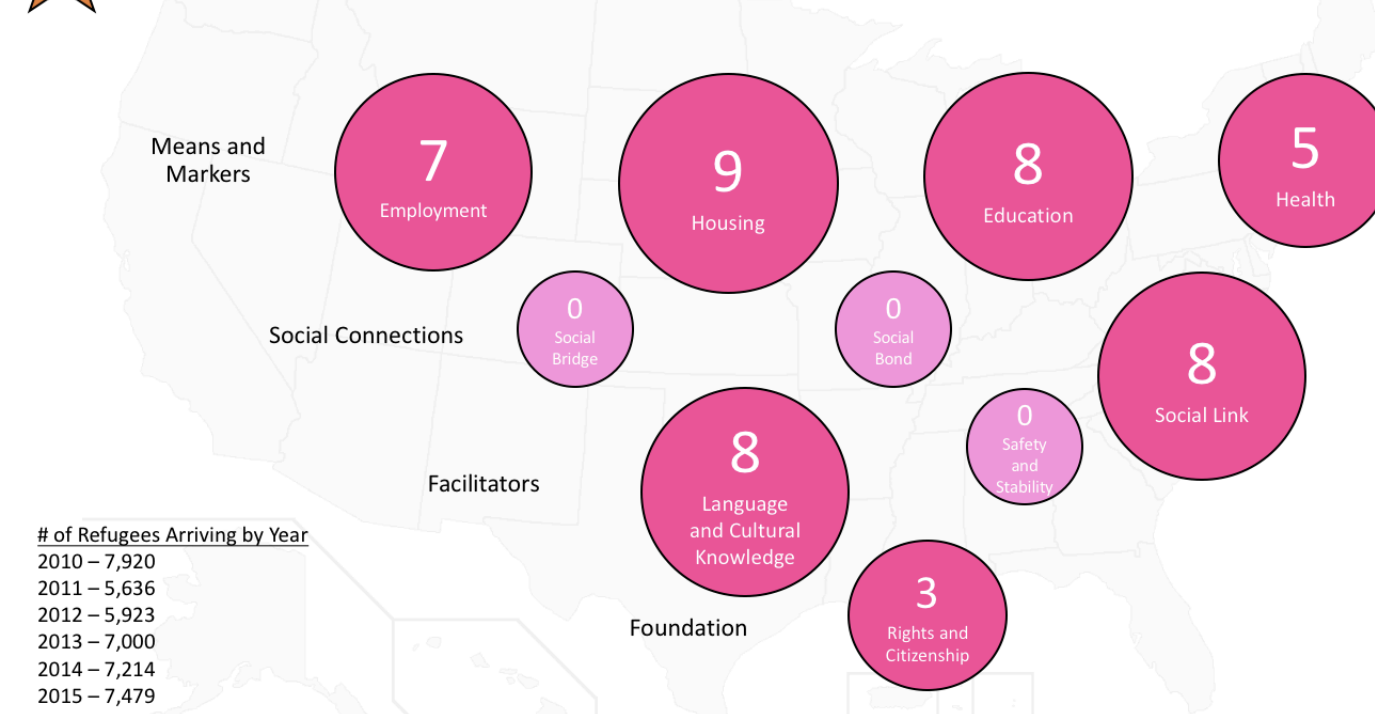
Utah has 19 Providers



Massachusetts has 09 Providers



Texas has 22 Providers



California has 27 Providers

